

# LIGHTHOUSE NEWS

Spring Edition

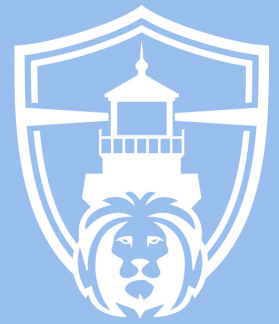
Hello Lighthouse Family!

This Spring has been full of exciting events and BIG changes here on our LCS campus-- we know how busy things are during this season, so we're covering the past 2 months in this issue to keep you in the loop!

As we continue to grow our administrative, academic, and spiritual support staff to better love and serve our students and families, there is one specific area that we want to highlight this season. We have just instated a brand-new Office of Pastoral Care, where all students will be able to receive individual spiritual counsel and support throughout the year. Our heart is to continue to improve and expand our efforts so that our students can learn and grow in a safe, supportive environment.

We can't wait to share with you the rest of what our Spring has looked like, from fun events our school has hosted, outstanding academic achievements of students, and inspiring support from our LCS community.

Enjoy!



LIGHTHOUSE  
CHRISTIAN SCHOOL

## Newsletter Highlights

REWIND

---

COMING UP

---

REMINDERS

---

WHAT'S NEW

---

CLASSROOM  
HIGHLIGHTS

---



HAVE ANY QUESTIONS?

[info@lighthouseministries.org](mailto:info@lighthouseministries.org)

# Rewind



LIGHTHOUSE  
CHRISTIAN SCHOOL



**100 Days of School!** Students in our PreK and Elementary dressed up like they were 100 years old to celebrate!



**Valentine's Day:** Many of our classes held Valentine's parties, dressed up in festive attire, and our Junior Class even sent out personalized Valentine Grams to students all across campus!



**Birthday Parties:** Did you know that Lighthouse LOVES birthdays?? From PreK all the way to 12th grade, we enjoy celebrating our students. Whether that's a birthday party during lunch or balloons and encouraging notes on a locker, we want to love and care for your students on their special day.

*If you'd like to make your student's day extra special, let us know how we can help!*



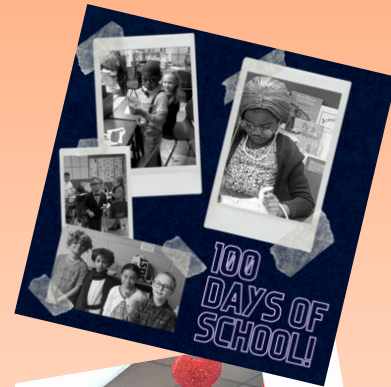
**Academic Award Ceremonies:** Throughout the year, we want to recognize and celebrate students' achievements as they continue to work hard and excel in their classes. This month, we had an incredible turnout for each of our award ceremonies-- we are so proud of our students!



**Chapel:** This month, we had some of the best chapel services EVER! We heard God speak through pastors from local churches, our amazing Principals, and representatives from our President's Office. We know God is moving on our campus, and we want to invite ALL parents, guardians, grandparents, and family to attend our chapel services to support your student and hear what we are learning at LCS. Check out our Chapel Schedule online to attend our next service!



**Athletics:** Soccer Season is HERE! We had a huge turnout for our Soccer Tryouts, and practice is in full swing. GO LCS LIONS!



# Coming Up



Join our Parent Teacher Fellowship! Submit a form and let us know how you'd like to get involved and volunteer!



Register for Summer Day Camp!  
~ Grades 1-6 ~  
Learn | Explore | Play

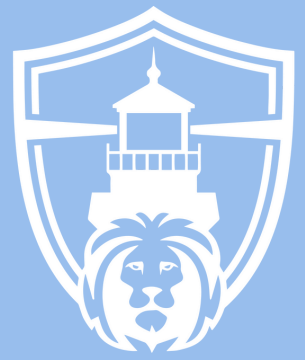
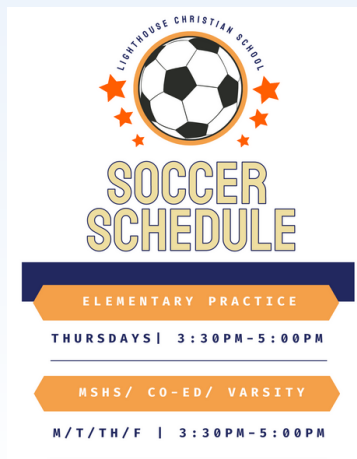


Join us for our weekly Chapel services! We welcome all family and friends of LCS students to experience what we are learning each week!

A graphic with a light blue background and white diagonal lines in the corners. It features the text "Lighthouse CHAPEL SCHEDULE" at the top. Below is a table with days of the week and corresponding chapel times and locations.

Day	Chapel Time and Location
Monday	Preschool Chapel 9AM-10AM
Tuesday	Office of Pastoral Care On-Campus
Wednesday	Elementary Chapel 8:30AM-9:30AM
Thursday	Office of Pastoral Care On-Campus
Friday	MSHS Chapel 11AM-12PM Office of Pastoral Care On-Campus

Soccer Season is going strong!  
Stay in the loop on all our games and come show your support! Our game schedule is on the right. See you there!



LIGHTHOUSE  
CHRISTIAN SCHOOL

## Quick Links

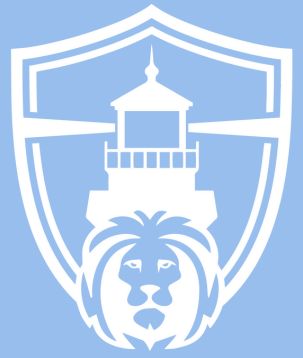
[Parent Fellowship Form](#)

[Summer Day Camp  
Registration](#)

[Chapel Schedule](#)

[Athletics Calendar](#)

# Reminders



LIGHTHOUSE  
CHRISTIAN SCHOOL

## Quick Links

[RE-ENROLLMENT](#)

[YEARBOOK  
PURCHASE LINK](#)

[YEARBOOK  
AD FORM](#)

[FUNDRAISER  
DONATIONS](#)

Don't Forget to  
Re-Enroll!



Buy the 2023  
Yearbook!



Want an ad in the yearbook to support your student or business? Click on the link to the right!

Help us fundraise to  
Re-Open the  
Cafeteria!



**LCS FUNDRAISER**  
GRADES K-12 | MARCH 2023

STUDENT FULL NAME		GRADE					
SUNDAY	MONDAY	TUESDAY	WEDNESDAY	THURSDAY	FRIDAY	SATURDAY	
PRAY FOR YOUR SPONSORS EVERY DAY!			1 PAID	2	3	4	
NAME OF SPONSOR HERE →		PERSON'S NAME		10 \$54 TURN IN DAILY NAME, HOME DAY			
5	6	7	8	9			
12 \$12 SPENDING		BREAK		17			
19	20 \$98 TURN IN DAILY NAME, HOME DAY	21	22	23	24 \$147 TURN IN DAILY NAME, HOME DAY	25	
26	27	28	29	30	31 \$495 TURN IN DAILY NAME, HOME DAY	TURN IN FULL CALENDAR FOR A SHIRT AND BUTTER'S PARTY!	

**BUY THE WEEK!**  
NAME OF SPONSOR HERE \_\_\_\_\_

WEEK ONE (\$54): \_\_\_\_\_  
WEEK TWO (\$98): \_\_\_\_\_  
WEEK THREE (\$147): \_\_\_\_\_  
WEEK FOUR (\$495): \_\_\_\_\_

**TURN-IN TO WIN!**  
(FULL \$ AMOUNT MUST BE TURNED IN ON-TIME TO BE ELIGIBLE FOR REWARDS - REWARD DATES WILL BE SCHEDULED FOR CALS AT A LATER TIME)

BY MARCH 20-(54): PAJAMA AND MOVIE DAY 🧺  
BY MARCH 20-(98): PIZZA PARTY AND GAME DAY 🍕  
BY MARCH 24-(147): ROLLER SKATING DAY 🛼  
FULL CALENDAR-(495): DAVE AND BUTTER'S PARTY 🧈



# LIGHTHOUSE NEWS

## Office of Pastoral Care



**Donell Colbert -  
"Pastor D"**



**Pastor John Yancey**

Starting this month, Lighthouse has instated The Office of Pastoral Care, lead by Pastor D and Pastor John. This is an ongoing initiative to serve our entire campus with spiritual guidance, counseling, and community activities. Pastor D and Pastor John have served their local community for a collective 50+ years and are currently the pastors of The Chapel at Antioch and Lighthouse Christian Fellowship.

Our pastors will have on-campus office hours and availability every week to meet with and pray over our students, staff, and campus. Weekly Chapel programs will be lead by our on-campus pastors and include other guest speakers throughout the year. We hope to add more programs as this initiative grows, including regular Community Youth Gatherings, additional counseling services, and weekly devotions for our staff.

# LIGHTHOUSE NEWS

Who's New This Month



**KIMBERLY  
CHANDLER**

**Director of  
Admissions**

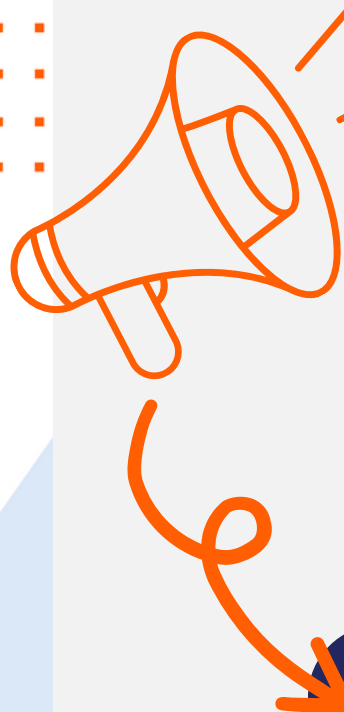


## NEW FACES

We are continuing to expand our team this and want to introduce some of our newest staff: Kimberly Chandler, Betsy Breegle, Bryan Gray, and Yasmin Castellanos. They are all wonderful additions to our team and help to keep LCS running smoothly! If you ever see them on campus, be sure to say hello!

## GET TO KNOW KIMBERLY

I grew up in San Francisco, where I met my husband on a blind date and shortly thereafter got married, moved to the UK, and began a role as an HR Coordinator. One decade later, we moved back to the States, where I worked in many academic organizations, ranging from the Board of Education to the Director of a Preschool. My hope is that by working with Lighthouse, our team can ensure that every student will be valued, seen, encouraged, and supported.



## WE ARE HIRING!

- Teachers
- Front Desk
- Facilities

**Apply Here**

# LIGHTHOUSE NEWS

Who's New This Month



**BETSY BREEGLE**

Elementary Student Services



## GET TO KNOW BETSY

I love to write! I'm from Kentucky and studied Elementary Education at Lipscomb. I'm a proud Great-Aunt and animal lover! I've worked with children through churches and educational organizations for over 20 years. I love coffee, helping others, and working with students! I love the Lord and hope to follow Him in all my ways.

## GET TO KNOW BRIAN

Some fun facts about me:

I enjoy playing basketball, fishing, and anything outdoors. My heart is for missions in Thailand, which is where I met my fiancée Saa! I am an alumnus of Lighthouse Christian School (class of '14) and truly believe that being at LCS has changed my life. I love to serve!



## BRIAN GRAY

Facilities & Maintenance Team

# LIGHTHOUSE NEWS

Who's New This Month



THOSE THREE REMAIN  
*Hope, Love,*  
CREATES  
LOVE

Facilities &  
Maintenance  
Team

**YASMIN  
CASTELLANOS**

## GET TO KNOW YASMIN

Here are some fun facts about me:

I am originally from Honduras, I have 3 beautiful children, and one of my favorite foods is Chicken Alfredo. I love hanging out with my kids, playing soccer, and getting my nails done!

Know someone you think would  
be a great addition to our team?

Send them our way!

[Apply Here](#)

## WE ARE HIRING!

- Teachers
- Front Desk
- Facilities

[info@lighthouseministries.org](mailto:info@lighthouseministries.org)



# LIGHTHOUSE NEWS

What's New This Month

## CAMPUS UPDATES

We are continuing to update and improve our campus.

Here are some of the ways we continue to renovate our space to provide the best environment possible for our students and staff!

Brand new sanitation dispensers campus-wide!



We are installing new and improved electrical, heating, and A/C units across our campus!

# PRESCHOOL



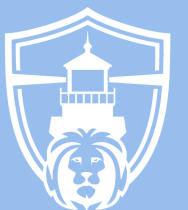
## Read Across America Week



## Daddy Daughter Dance



LOVE | HONOR | TRUST



LIGHTHOUSE  
CHRISTIAN SCHOOL



# ELEMENTARY



**VALENTINE'S DAY | READ ACROSS AMERICA WEEK  
BLACK HISTORY MONTH | CLASSROOM FUN**

**LOVE | HONOR | TRUST**



**LIGHTHOUSE  
CHRISTIAN SCHOOL**



# MIDDLE/HIGH SCHOOL

Chapel & Worship



Soccer Practice



Bible Study



Feature Friday



Senior Fundraiser

**Fundraising Day**  
to support  
**Lighthouse Seniors**

**PANDA EXPRESS**

When: Feb. 23, 2023  
Time: 10am-5pm  
Where: 5850 Hickory Hollow Lane Approach TN 37033

- 1 How to Order: Online or the App
- 2 fundraiser code link
- 3 20% of event sales will be donated to the LCS Senior Class.

reversion: bring paper flyer or show it on your smartphone



Study Time



LOVE | HONOR | TRUST



LIGHTHOUSE  
CHRISTIAN SCHOOL